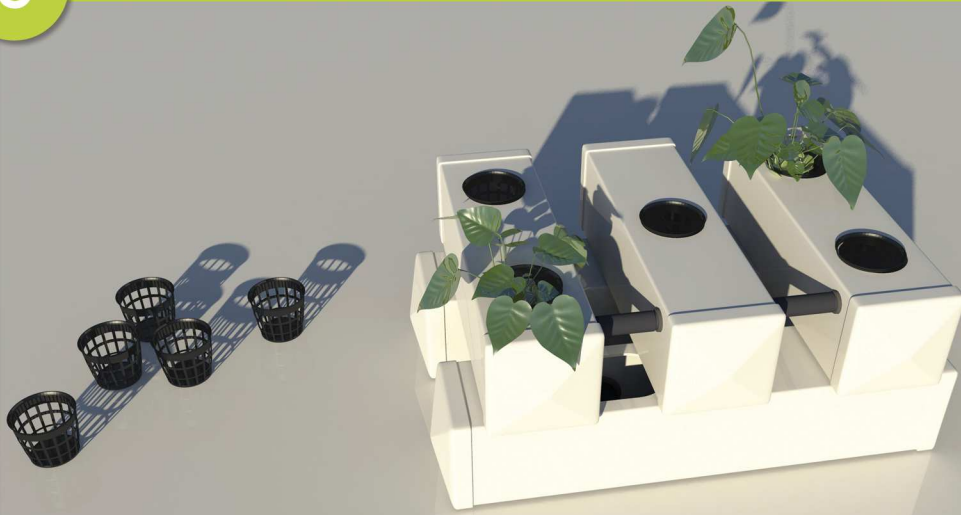


5

PREPARE FOR YOUR FIRST RUN



- Make sure you have completed step 1 through 4 and all your connections are OK.
- Make sure your system is empty and clean.
- Do not clean your system with aggressive, acidic solutions.
- Fill your plant baskets with (PH neutral) hydro pellets (or what ever medium you prefer) and place the baskets in the holes on the top surface of your system.
- Before you use your Flow & Grow, we suggest you run a PH-neutral solution through your system.
- Empty your system and fill your Watertanks with a fresh nutrient solution.
- Make sure you follow your feeding schedule regarding PH- and EC-values.
- Fill all Plant Baskets with your hydro pellets or what ever medium you prefer.
- Make sure your Waterpump is submerged before you plug it in.
- For indoor growing follow your grow schedule.

If you are new to Aero-/Hydroponic gardening, make sure to test your PH- and EC-values on a regular basis.

Remember! A hydroponic system is less forgiving then growing on soil!

DUTCH HYDROPONIC SOLUTIONS

Dutch Hydroponic Solutions B.V.
St. Laurensdreef 45
3565 AJ Utrecht

🌐 www.hydroponic-solutions.nl
✉ sales@hydroponic-solutions.nl

Flow & Grow

DUTCH HYDROPONIC SOLUTIONS

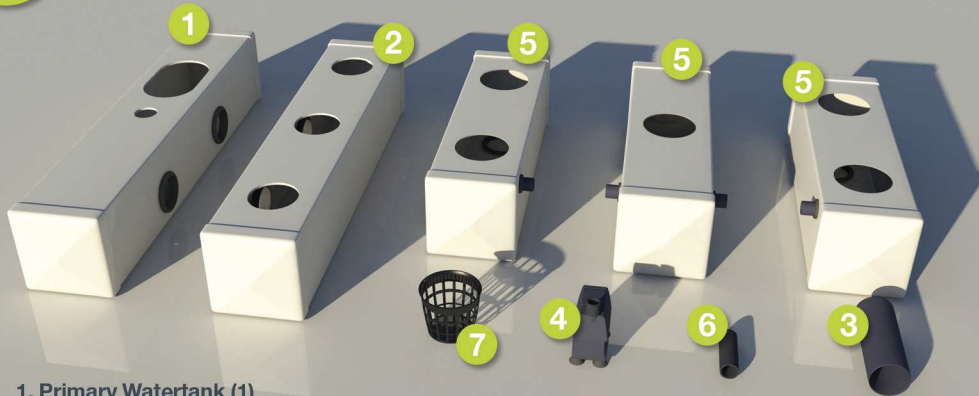


Flow & Grow 60
Flow & Grow 90
Flow & Grow 120
Flow & Grow 150
Flow & Grow W400
Flow & Grow W600
Flow & Grow W1200
INSTRUCTION MANUAL



1

CHECK YOUR PARTS

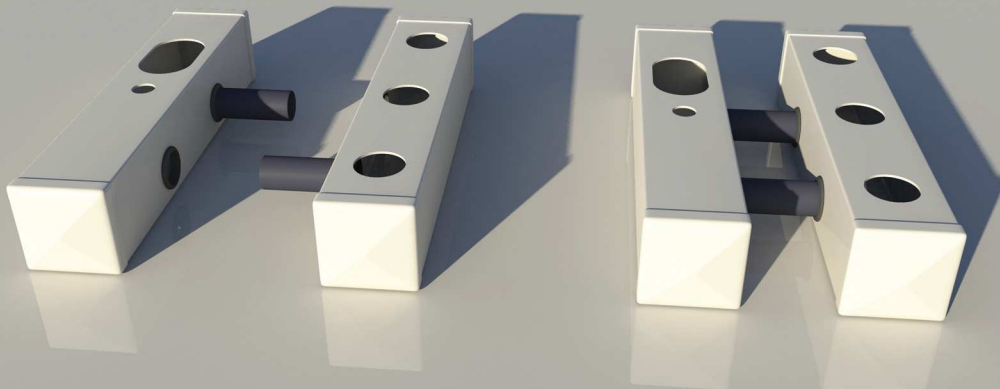


- 1. Primary Watertank (1)
 - 2. Secondary Watertank (1)
 - 3. Watertank Connection Pipe (2)
 - 4. Waterpump (1)
 - 5. Fog Chamber Left, Center, Right (3, 4 or 5)
 - 6. Fog Chamber Connection Hose (2, 3 or 4)
 - 7. Plant Basket (5, 14, 17, 23, 28 or 39)
- Optional: Connection Hose Clamps (4 or 8)

Specifications or number of parts depend on your Flow & Grow model.

2

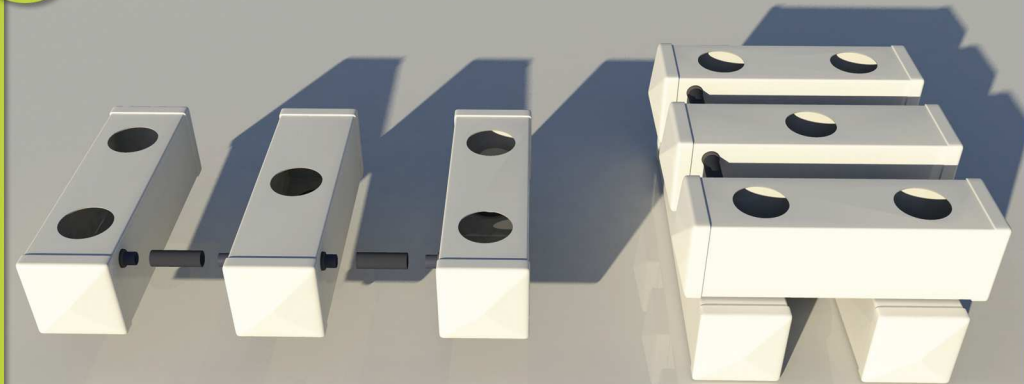
WATERTANK ASSEMBLY



- Connect the Primary and Secondary Watertank with the provided 50mm Connection Pipes.
- For a perfect seal and easy installation between the Connection Pipes and the pre-fitted black rubber rings on your Watertanks, we suggest you use ACID FREE silicone or lubricant.

4

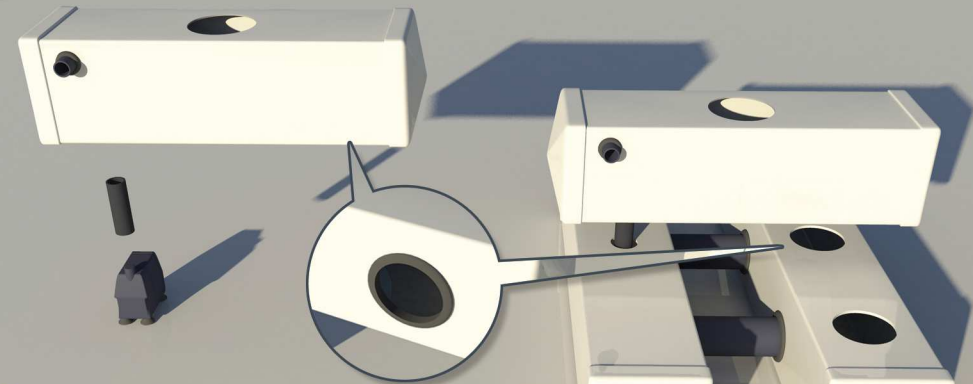
CONNECT REMAINING FOG CHAMBERS



- If you ordered the optional Hose Clamps, this is where you use them.
- Connect the remaining Fog Chambers with the supplied Connection Hoses and, if you have them, use the Hose Clamps to secure your setup to prevent leaks.
- The above image is illustrative because the center Fog Chamber is already assembled.
- Make sure the black rubber ring on the bottom of the remaining Fog Chambers fit nicely in the drainage holes of the Secondary Watertank. No click, no snap... it fits loosely!

3

CONNECT THE PUMP AND THE CENTER FOG CHAMBER



- Connect the Waterpump to the Waterpump Hose (if not already pre-fitted) and place the Waterpump in the Primary Watertank (with the Waterpump Hole).
- Place the center Fog Chamber over the assembled (step 2) Watertanks.
- Align the small nozzle to the Waterpump Connection hose and connect them.
- Make sure the black rubber ring on the bottom of the center Fog Chamber fits nicely in the drainage hole of the Secondary Watertank. No click, no snap... it fits loosely!