

Horti Lightsystems

Specification Hortilight Sunfactor 2.0 Series

Sunfactor Smart Series LED Grow light

Release Version 2E
2018-11-01

email: info@hortilight.eu



Sunfactor 2.0 Smart Series LED Grow light



PATENT No.

ZL2012 30401151.X

ZL2012 20419157.4

➤ Advantages characteristics of Sunfactor 2.0 Smart Series

✧ Combination of super power and high power LEDs:

High efficient and high reliable SMD package Ceramic LED's. Combination of 63W COB LED and 3W LED's for advanced power light output and penetration.

✧ Combination of 3 independent channels:

Smart programmable 3 channels design for **growing, vegetation** and **flowering** independently.

✧ Programmable auto-dimmed control:

Each channel can be separately auto-dimmed by Smart programmable controller.

✧ Energy saving:

Low power consumption with programmable Smart Controller and automatic brightness control.

✧ OEM climate lighting cycle:

Easy to use preprogrammed all-day climate light cycle with sunset, sunrise, cloudy, sunny and moon light which plants enjoy like natural sunlight cycle.

✧ Special Lenses:

Special lenses designed by advanced optical lens company to bring higher light penetration and better light coverage.

✧ NIDEF Fans:

Made in Japan NIDEF fans are high quality and ultra-silent with a longer lifespan than most fans. The low noise operation ensure stress free usage.

✧ Serial control for multi lamps:

The Sunfactor 2.0 Smart Series can be interconnected and easily controlled by one external controller; Plant breeders praise this Smart function, which also operates when growing in different rooms.

✧ Aluminum housing:

The Sunfactor housing is made of high quality anodic aluminum oxide, which is free of corrosion even in high humidity environment. Aluminum alloy makes the housing much stronger as standard iron and does have a lower total weight.

✧ Advanced heat dissipation design:

The advanced heat dissipation design of the Smart Sunfactor 2.0 Series does link the inner heat sink and outer aluminum frame for faster heat dissipation, so the temperature of LED junction is much lower than in standard LED design.

✧ Elegant shape:

The aluminum surface is brushed, which has elegant black or metal gloss appearance.

➤ **Sunfactor Smart Series**



✧ **Material list and Advantages**

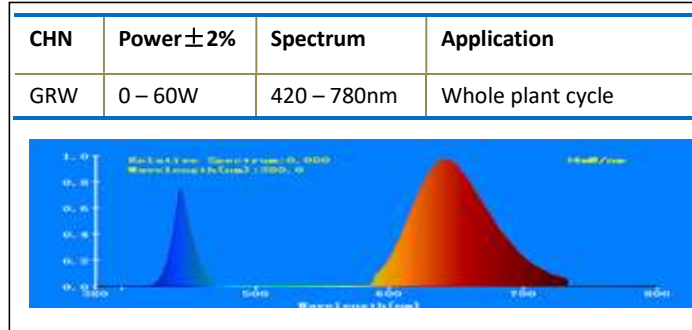
Part Name	Material	Advantages
1. AC input	Stainless steel, Copper	100% rust free, >2000 Volt RMS isolation
2. Signal input	Stainless steel, Copper	100% rust free
3. Optical lens	Optical Polycarbonate	Designed by advanced Optical Company, beam angle 78°
4. Optical lens	Optical Polycarbonate	Designed by advanced Optical Company, beam angle 105°
5. Housing frame	Aircraft aluminum	Sand blasting and anodic oxidation craft, high corrosion resistance, elegant metal gloss
6. Screws	Stainless steel	100% rust free
7. Housing front	Aircraft aluminum	Brushed and anodic oxidation craft, high corrosion resistance, elegant metal gloss
8. AC output	Stainless steel	100% rust free, >2000 Volt RMS isolation, anti-electric shock
9. Signal output	Stainless steel	100% rust free
10. Silence fans	NIDEC	Famous longer lifespan Japanese Silence fans, widely used in DELL/HP Computer Servers
11. Housing back	Aircraft aluminum	Brushed and anodic oxidation craft, high corrosion resistance, elegant metal gloss
12. Hanger	Stainless steel	100% rust free

✧ **Size and weight**

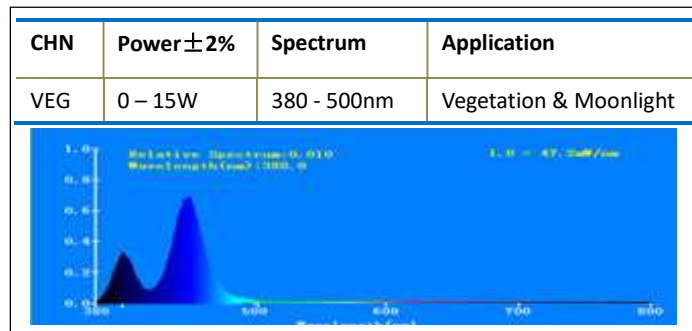
Models	Products Size	Products Weight	Package Size	Gross Weight
135WI	220*220*70mm	1.68 Kg	351*256*106mm	2.44 Kg
270WI	370*220*70mm	2.98 Kg	501*256*106mm	3.78 Kg
400W	530*220*70mm	4.30 Kg	661*256*106mm	5.20 Kg
540W	370*370*70mm	5.26 Kg	501*406*106mm	6.28 Kg
800W	530*370*70mm	7.24 Kg	661*406*106mm	8.76 Kg

➤ LED Channels Distribution

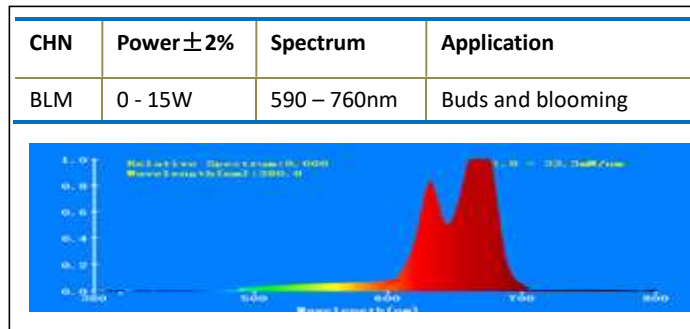
✧ GRW Channel Power and Spectrum



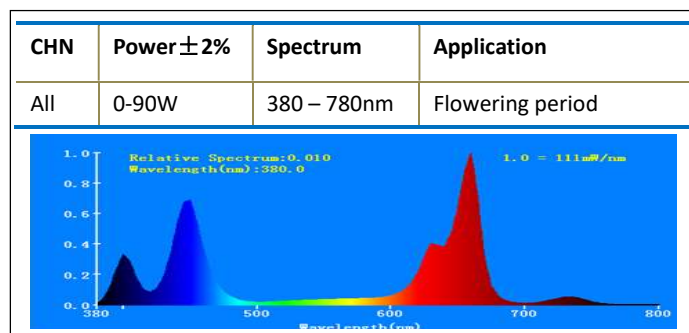
✧ VEG Channel Power and Spectrum



✧ BLM Channel Power and Spectrum



✧ GRW+VEG+BLM total Power and Spectrum



➤ **Multi lamps interconnection**



✧ **Power interconnection:**

Maximum current for one Power cords is 15A with a maximum Wattage of 2000W@220VAC or 1000W@110VAC;



✧ **Power interconnection cord:**

For power interconnection an Interconnection Power cord is available in different lengths.

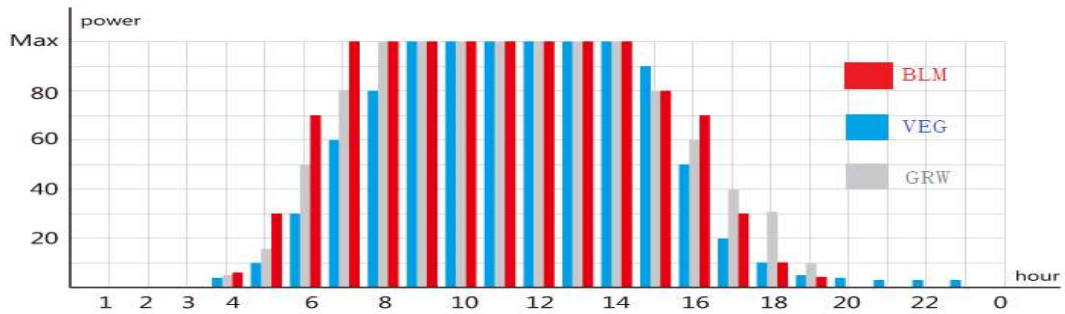
➤ **Smart wireless Controller**



Note:

- 1) One Smart Wireless Controller can control 22 groups of maximum 99 pieces Sunfactor 2.0 lights;
- 2) The distance between the Wireless Controller and lamps should not exceed 30 meters for having reliable RF signal transferring.
- 3) The Remote Controller does control the Smart Controller by IR signal transferring.

➤ Custom program settings



- Users can preprogram a preferred light climate cycle with the Smart Controller.
- The Smart Controller is also programmed with multiple standard climate setting, like a 12 hours Flowering setting and a 18 hours Grow setting.

➤ Parameters 135W Module

Item	Parameter	Item	Parameter
Voltage AC	86 - 265VAC	Temp arise LED-air	< 45 °C
Power consumption	90W ±2%	Temp arise heat sink-air	< 30 °C
Efficiency	> 90%	Life span	> 5 years
Standby consumption	< 2.5W	Temp environment	< 30 °C
Power factor	> 90%	Humidity environment	< 85%
Harmonic wave	< 10%	Warranty	2 years

➤ Accessories of Products



➤ **Dealer information**