



Led Flower Growlights

---

Technical Specifications

## Spectrabox Professional (6)

Release date: 2019/04/01



# Spectrabox

Release Version: V2.0

Release Date: 2019/12/01

## Advantages Spectrabox Professional LED grow light

### 1. High efficiency and Energy saving

The Spectrabox Professional series are high efficient LED grow lights. Tests have shown that LED grow lights give plants greater light intensity and grow rates than standard HPS grow lights, yet using only 50% of the electricity.

### 2. PAR light output

The Spectrabox Pro 6 is provided with CREE, & HPO LEDs. The LEDs are selected per color for their highest light output at the best possible quality. The main 660nm HPO "flower" LEDs belong to the most powerful LEDs, with a PAR photon flux of 2,95  $\mu\text{mol}/\text{J!}$

### 3. Dual-beam lenses for best light coverage

The LEDs are equipped with unique dual-beam optic lenses for both a powerful deep and wide light coverage. A full-spectrum light coverage is already achieved at a minimal distance of 2 inches!

### 4. SMT & SPC technology for long lifespan

The high power CREE & HPO LEDs are mounted by computer controlled SMT technology and driven at a safe amperage of 650mA, to ensure a long lifespan at best PAR light output. SPC technology guarantees the Spectrabox Pro 6 will work stable, even if any of the LEDs fail, it will not affect other LEDs.

### 5. Flower Booster

The Spectrabox Pro 6 is a no-nonsense LED Grow Light with only a switchable Flower Booster, to create an ideal growing and flowering environment to optimize yield. The middle LED unit is switched on/off by the Flower Booster switch and is off during Growth.

### 6. Plug and Play

No setup required; no reflector and ballast are needed. A Spectrabox is a plug- and play grow light. Just plug directly into a grounded AC230 Volts power socket, which makes the installation safe and simple.

### 7. Aluminum frame

The Spectrabox Pro 6 is provided with an extreme rigid aluminum lightweight frame. All metal parts are rust free to ensure longevity.

### 8. Silent & smart fan drive

The LEDs are SMT mounted to the aluminum PCB for excellent heat dissipation. To optimize LED cooling and minimize sound output an Ultra Silent fan with heatsink is mounted directly on the PCB.

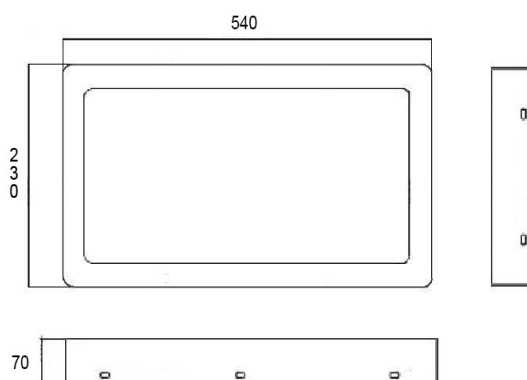
### 9. Easy maintenance

The Spectrabox Pro 6 is modular build with only two electrical parts; the LED driver and the LED light unit. Both parts are easily replaced for maintenance or updates. Also when the warranty is expired, the maintenance and updates can easily be done by customer.

### 10. Environment friendly

A Spectrabox doesn't contain harmful substances such as mercury, iodine and lead like HPS & MH bulbs. LED's are superior in comparison to other lighting technologies in terms of negative environmental and health effects during the manufacturing process. Producing LEDs consumes far less energy than manufacturing other lighting and it was noted the LEDs contain no mercury and few if any toxins such as iodine and lead.

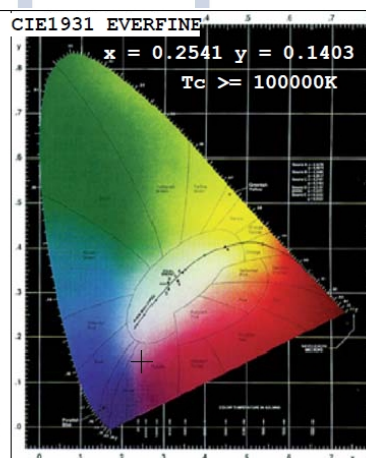
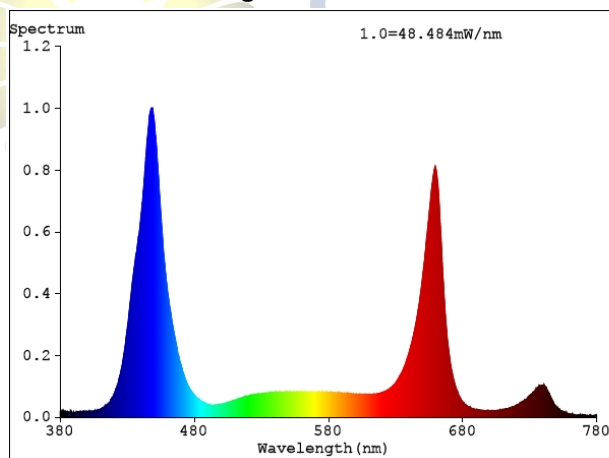
## Application 270W Spectrabox Pro 6



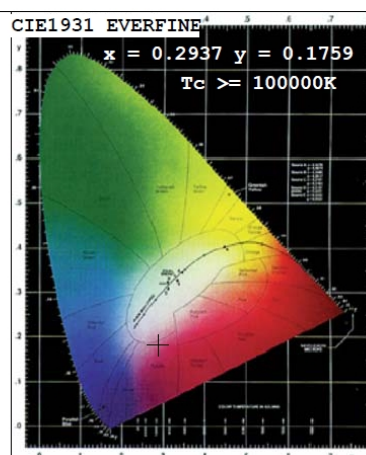
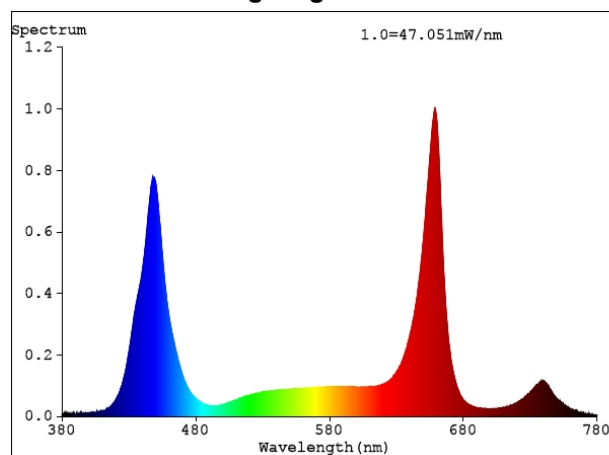
1. The Spectrabox Professional LED grow light is suitable for greenhouse and indoor "darkroom" lighting.
2. The 270W Spectrabox Pro 6 LED grow light replaces a 250W - 400W HPS grow light.
3. Ideal for all phases of plant growth and works well in any garden, either hydroponics or soil based.
4. Using SCS to create optimal spectrum for plants photosynthesis and photo morphogenesis.
5. OEM/ODM or customized integrated grow lighting solutions are available on request.

## Spectrum Spectrabox Pro 6

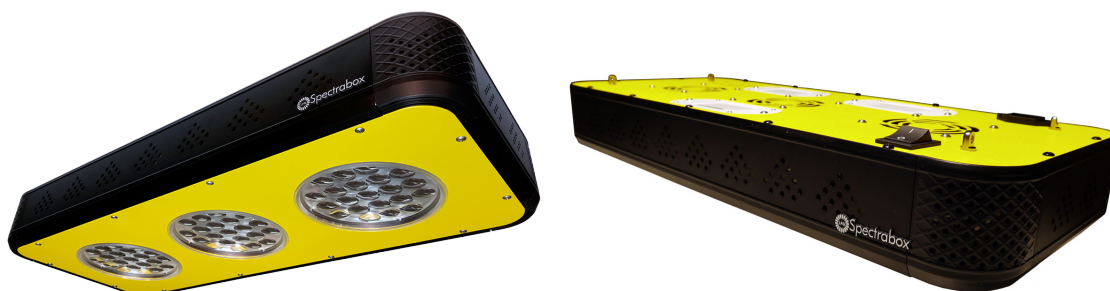
### Vegetative & Growth stage ✓ Flower Booster off



### Reproductive & Flowering stage ✓ Flower Booster on



## Pictures 270W Spectrabox Pro 6



## Technical specification 270W Spectrabox Pro 6

Item	Value	Item	Value
LED chip	3W / 5W CREE & HPO	LED value	270 Watt
Number of LEDs	90 pieces	Power factor	> 92%
Wavelength	Full-spectrum	Power consumption	~ 174 Watt
Optic lenses	Dual-beam	Power consumption grow	~ 54 Watt
PAR photon flux	~ 2,25 $\mu\text{mol} / \text{J}$	Voltage	230 Volts
Height above plants	> 50 mm	Frequency	50/60 Hz
Estimate lifespan	Up to 35.000 hours	On/off switch	Flower Booster
Working environment	-20 ~ + 40°C	Ultra-Silent fans	3 pieces
Spectrabox housing	Aluminum	Relative humidity air	< 85%
Size Spectrabox	550x230x70 mm	Weight	3,9 Kg

## Certification and Warranty Spectrabox Professional [6]



### Note:

1. Indoor use only.
2. To avoid damage, don't use in dripping water environment or with dripping irrigation.
3. Determine the lighting time depending on growing phase and species.
4. Don't look into the Spectrabox light directly without wearing sunglasses.
5. Power socket should be connected to the ground/earth.
6. After sales service; 2 year warranty